

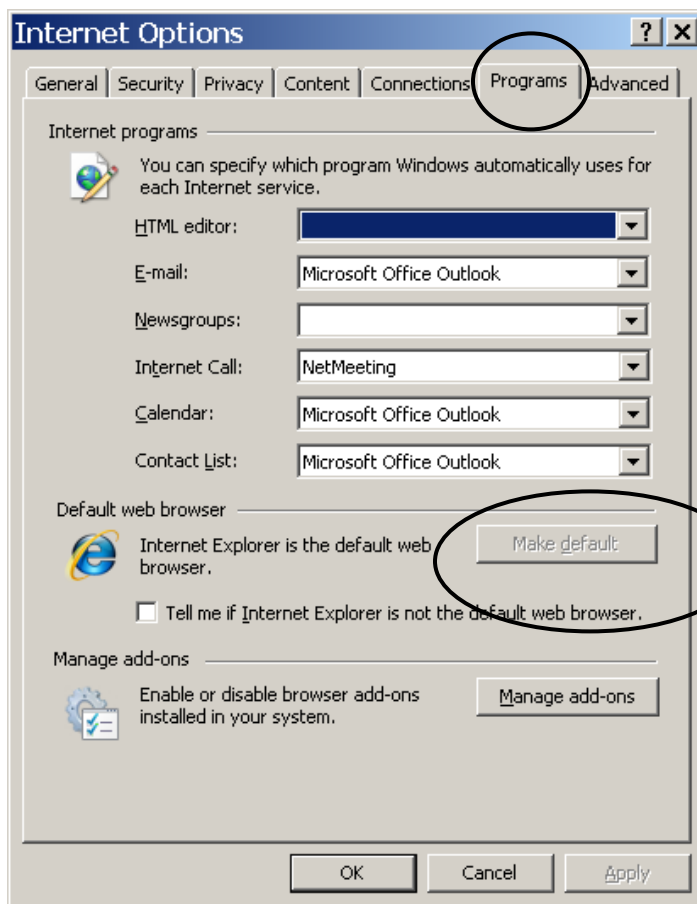
Printing pages in Enroll and Pay

If you are using Internet Explorer

While trying to print certain pages in Enroll and Pay, the printer prints a page with a header and footer information and main body of the page remains blank.

In order to solve this problem, Internet Explorer must be set as the default browser in your machine. Below are the steps you would do to get this set.

1. Open your Internet Explorer browser. Click Tools and select Internet Options.
2. Click programs tab.



3. Click 'Make default' button in the Default web browser.
4. Click OK.
5. Close Internet Explorer.
6. Open Internet Explorer.
7. Log in Enroll and Pay and try to print the pages now.

Increase the print size in IE8

If you can successfully print an Enroll and Pay page using IE8 version, you might notice that the print size is too small compare to the page size. Follow the steps to increase the print size.

1. Open Internet Explorer browser. Click File and select page setup.
2. Uncheck the box for Enable Shrink-to-Fit under Page Options Sections.
3. Reduce the left and right margin to 0.25 inches each.

Try to print the Enroll and Pay page and now you should see bigger print size.

If you still experience problems printing the pages through IE 8, Please consider using Mozilla Firefox for the purpose.

Please follow the direction below to print the pages through Mozilla Firefox.

If you are using Mozilla Firefox

In order to print the pages using the Mozilla Firefox browser, follow the steps below.

1. Open the page you want to print.
2. Right click on any portion of the screen.
3. Select 'This Frame' from the menu.
4. Select Print Frame...from the sub menus.
5. This will open the Print box.
6. Click OK.