

University of Kansas  
Recreation Services  
Lawrence, KS  
2011-2012  
Organization Chart

*Participants*

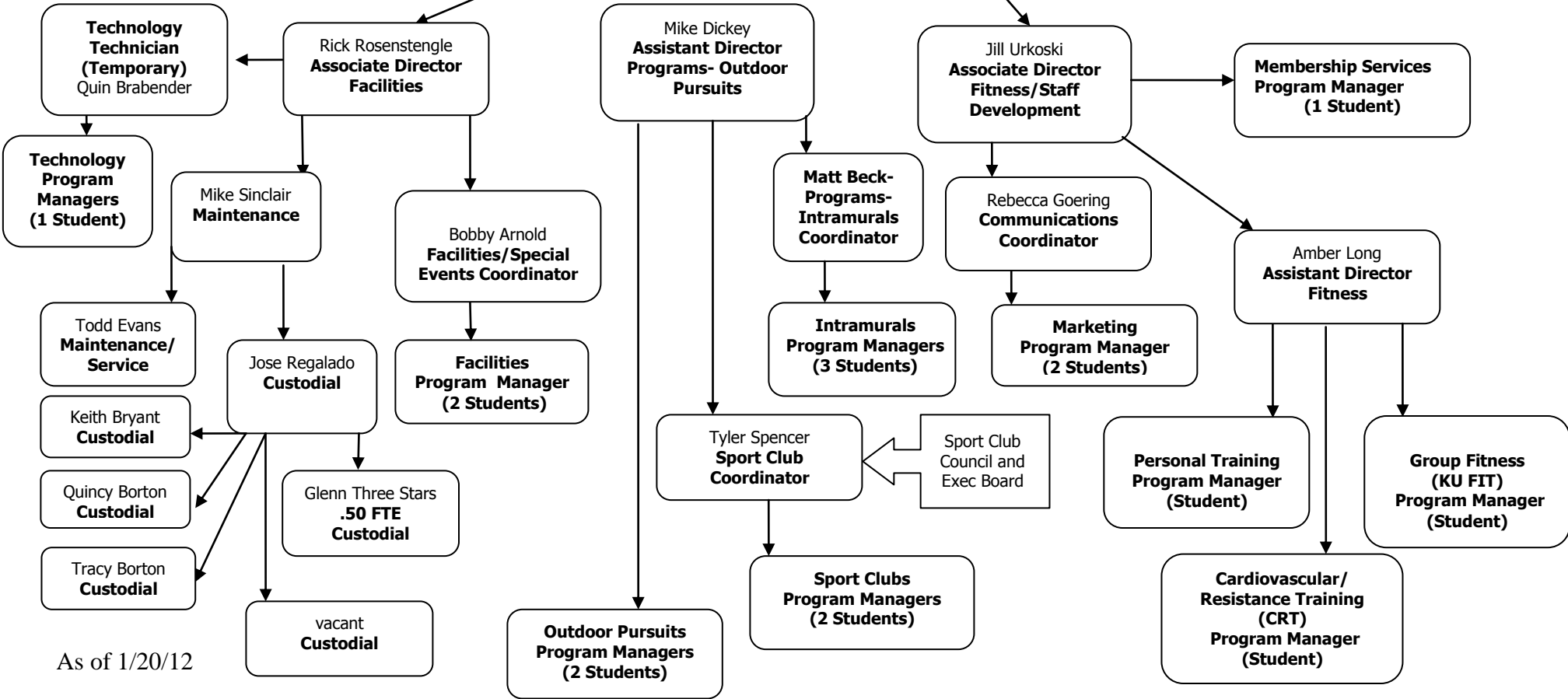
Tamara Durham  
**Interim Office of the Vice Provost for Student Affairs**

**BPRS**  
Judy Greenberg  
**Accountant**

**BPRS**  
Ronda Hume  
**.50 FTE**  
**Administrative Asst**

Frank DeSalvo  
**Associate Vice Provost for Student Success**

Student Senate → Recreation Advisory Board → **Mary Chappell**  
**Director**



As of 1/20/12