

KANSAS ROAD SCHOLAR PROGRAM

About the Program

In 2000, a committee of Kansas County Highway Association members began meeting to consider a road scholar program for Kansas. In conjunction with efforts from KS LTAP, KDOT and KAC, the program - Kansas County Road Scholar Program - began. In 2004 a committee of Kansas Chapter American Public Works Association members began meeting to consider a road scholar program for Kansas municipalities. Kansas Chapter APWA and KCHA collaborated and the brand new - Kansas Road Scholar Program - was born.

The Road Scholar Program's primary purpose is to promote a skilled workforce for Kansas public works agencies. The program provides training to increase knowledge of road maintenance procedures and improve technical, supervisory and managerial skills. The program enhances skills and knowledge of operators as well as those who supervise others, or aspire to management in public works operations.

Training is provided by KS LTAP, KAC, APWA and KDOT. Attendance is tracked and certificates of program completion are awarded twice a year by KCHA and annually by APWA, in conjunction with state-wide meetings.

Certificates are awarded at each at each program level and must be earned at the preceding level in order to obtain a certificate at a more advanced level. Classes may be taken in any order at any time. However, a certificate will not be awarded until all required courses are completed in the program.

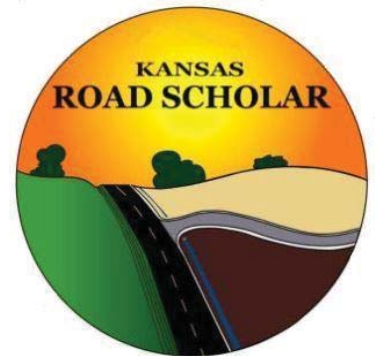
All Kansas public works employees are invited to participate in the Kansas Road Scholar Program. Enrollment in the Road Scholar Program is not a requirement of class attendance. This is not a degree program and completion does not certify a standard of performance. Each certificate states that the participant attended the required courses.

How to Participate

To Apply: Complete the application form and include the one-time non-refundable application fee of \$35 (required for each program level) and mail as directed on the application form. The Technical Skills Program and the Executive Development program are monitored by KS LTAP, and the Supervisory Skills Program is monitored by KAC.

Class Availability: Classes are offered in an on-going basis all across the State. Classes are provided on a 2-year rotation. Contact KS LTAP or KAC for information on training scheduled in your area.

Class Credit: Credit is given for classes taken within the last three years. The full series in each program must be completed within six years of program enrollment.





LEVELS OF THE PROGRAM



LEVEL I: ROAD SCHOLAR TECHNICAL SKILLS PROGRAM

Goal: To enhance the knowledge of general public works maintenance and construction methods, safety practices, and local government organization as it applies to the direct delivery of quality public service.

Objective: To provide a comprehensive technical skills program and recognition for participation in technical skills training.

Recognition: Road Scholar certificates are awarded to individuals who participate in all required courses within the required time period. Courses completed 3 years prior to registration are eligible towards completion of the certificate.

LEVEL II: ADVANCED ROAD SCHOLAR SUPERVISORY SKILLS PROGRAM

Goal: To develop supervisory skills for persons engaged in public works maintenance and construction activities.

Objective: To provide comprehensive supervisory skills training and recognition for participation in supervisory training.

Recognition: Advanced Road Scholar recognition is awarded to individuals who have achieved Road Scholar status and completed all of the above courses within the required time period. Courses completed 3 years prior to registration are eligible towards completion of the certificate. Level I and Level II courses may be taken simultaneously.

LEVEL III: MASTER ROAD SCHOLAR EXECUTIVE DEVELOPMENT PROGRAM

Goal: To enhance management and administrative skills for those who are appointed or aspire to be appointed as a county highway administrator, county or city engineer, or public works director.

Objective: To provide comprehensive administrator training and recognition for participation in the executive development program.

Recognition: Master Road Scholar is awarded to individuals who (1) have completed Levels I and II of the Road Scholar Program and the courses listed above; or (2) have 5 years of experience in public works administration and have completed Level II and the courses listed above in the required 6 - year time period. Level II and Level III may be taken simultaneously.

CENSUS INFORMATION

Level I: Technical Skills Enrollees

Counties

Butler County	14
Coffey County	2
Dickinson County	1
Ellis County	1
Finney County	1
Grant County	1
Jefferson County	3
Labette County	2
McPherson County	4
Miami County	4
Montgomery County	2
Pawnee County	5
Reno County	6
Riley County	9
Saline County	1
Sheridan County	1

Cities

City of Burlington	2
City of DeSoto	6
City of Lawrence	5
City of Ottawa	2
City of Salina	1
City of Yates Center	1

*Monitoring Agency:
Kansas Local Technical Assistance Program
(KS LTAP)*



Level II: Supervisory Skills Enrollees

As of October 2010 a total of 54 individuals have earned a certificate for completion of the Kansas Road Scholar - Level II Supervisory Skills Program.

*Monitoring Agency:
Kansas Association of Counties*



Level III: Executive Development Enrollees

Counties

Butler County	3
Clark County	1
Coffey County	5
Ellis County	1
Hamilton County	1
Jefferson County	1
Miami County	5
Montgomery County	1
Pawnee County	1
Riley County	4
Saline County	1
Seward County	1

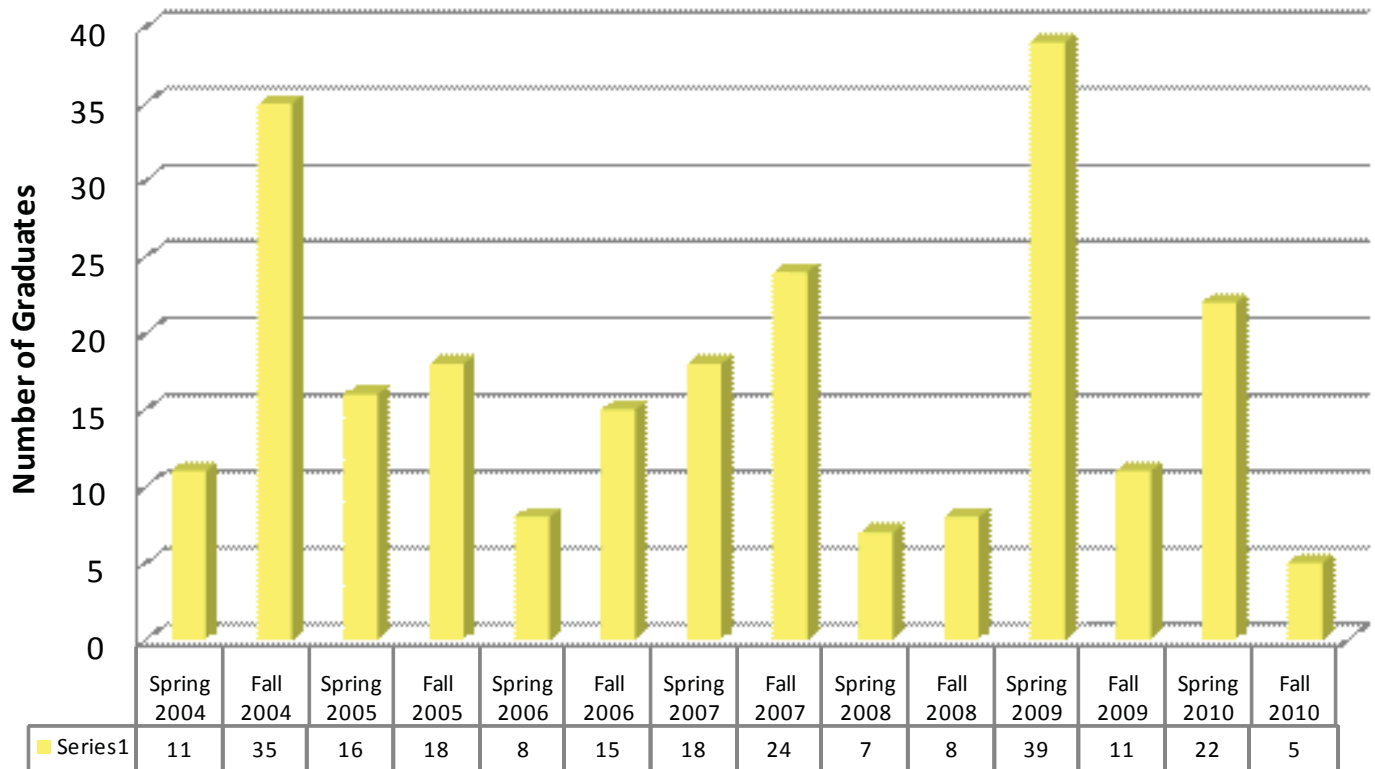
Cities

City of Burlington	1
City of Ottawa	2
City of Newton	1

*Monitoring Agency:
Kansas Local Technical Assistance Program
(KS LTAP)*

GRADUATE CENSUS

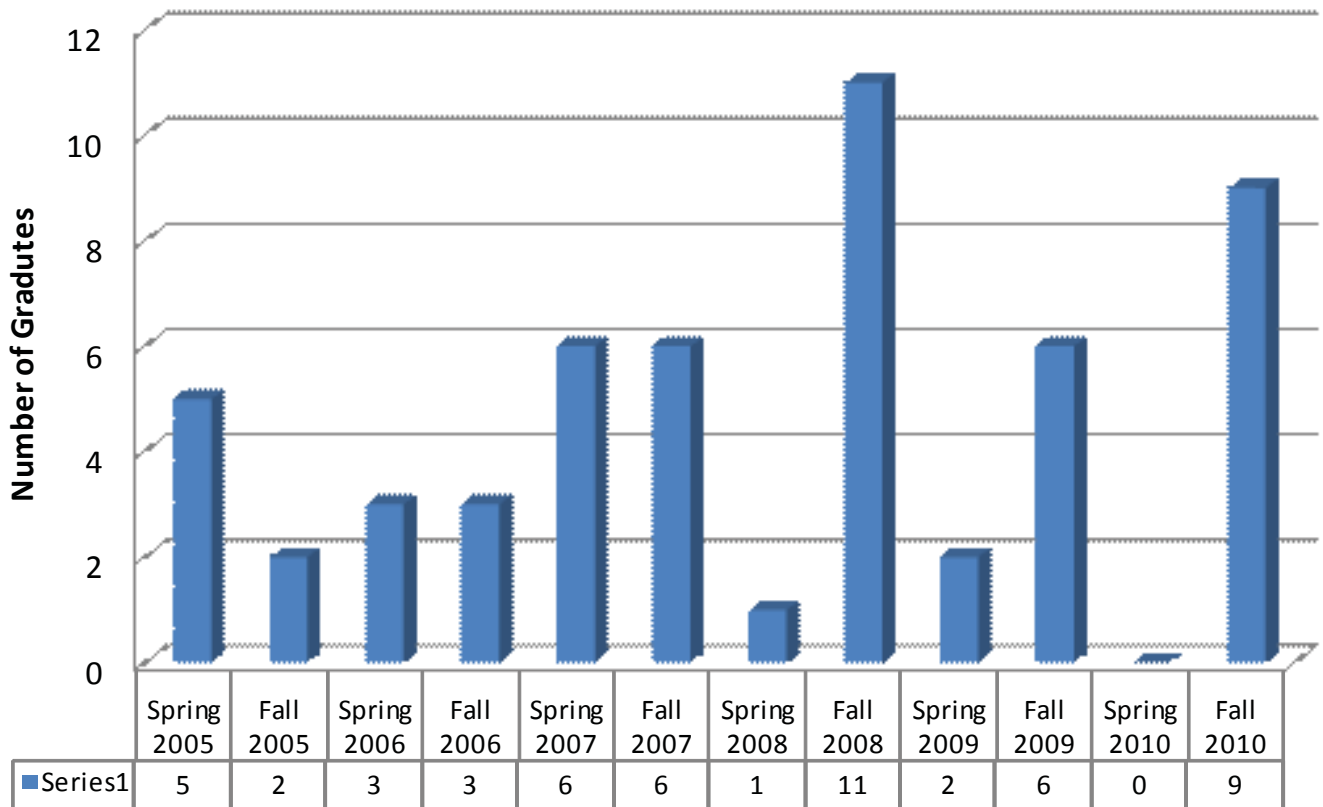
Road Scholar Level I: Technical Skills Program Graduates



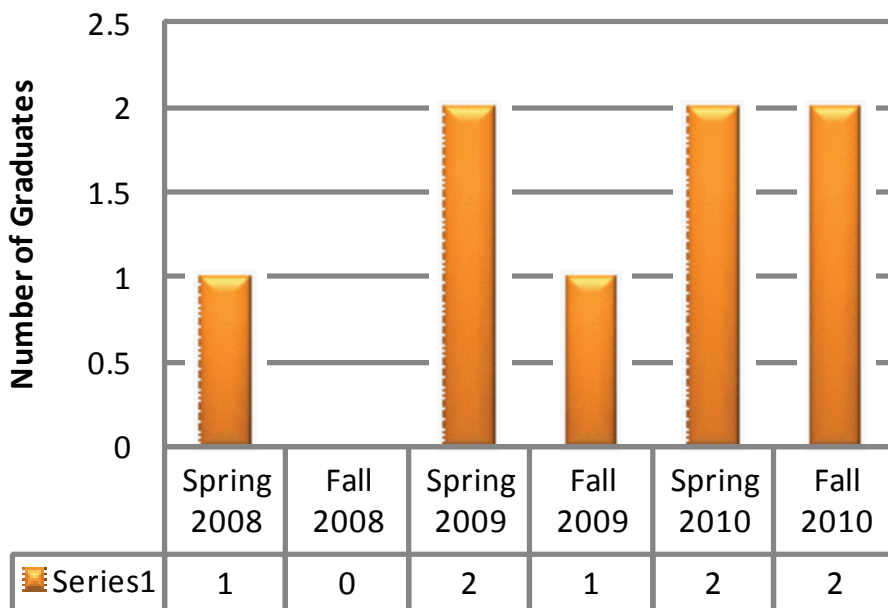
As of October 2010 a total of 237 individuals have earned a certificate for completion of the Kansas Road Scholar Level I Technical Skills Program. A group of 73 individuals continue to pursue the Level I certificate of these 47 are “active” (have taken classes in the last two years). Each “Road Scholar” attended then different training sessions for a total of at least 50 hours of instruction. This instruction was provided by the Kansas Association of Counties, Kansas LTAP, the TASK Program, and the National Highway Institute. This training has created strong partnerships among KAC, KCHA, KS LTAP and KDOT.

Participating agencies include, Counties: Allen, Barber, Barton, Bruno Township, Butler, Clark, Coffey, Crawford, Dickinson, Douglas, Edwards, Ellis, Finney, Ford, Franklin, Grant, Hamilton, Jefferson, Johnson, Kingman, Labette, Lyon, McPherson, Meade, Miami, Montgomery, Neosho, Norton, Osage, Pawnee, Republic, Riley, Reno, Rooks, Rush, Russell, Saline, Sedgwick, Shawnee, Sheridan, Smith, Stafford, Stanton, Trego, and Woodson. Cities: Burlington, DeSoto, Hays, Holcomb, Lawrence, Longton, Newton, Ottawa, Salina, and Yates Center.

Road Scholar Level II: Supervisory Skills Program



Road Scholar Level III: Executive Development Program Graduates



(Above) As of October 2010 a total of 54 individuals have earned a certificate for completion of the Kansas Road Scholar Level II Supervisory Skills Program.

(Left) As of October 2010 a total of 8 individuals have earned a certificate for completion of the Kansas Road Scholar Level III Executive Development Program. A group of 32 individuals continue to pursue the Level III certificate.

2010 GRADUATES

Level I Graduates

Name	County
Mitch Gardner	Allen
Jeremy Hopkins	Allen
Eula Hutton	Allen
Scott Reeder	Allen
Kim Riebel	Allen
Jason Brown	Ellis
Darren Williams	Barton
David Dirks	McPherson
Dwight Hopp	McPherson
Robert Bever	Montgomery
Bertra Manning	Riley
Douglas Marshall	Saline
Larry Brock	Saline
Carol Crough	Saline
Phillip Nusser	Stafford

Name	City
Richard Mason	Burlington
Kevin Boyce	Burlington
Kyle Sulzman	Hays
Mark Windholz	Hays
Ray Hamilton	Ottawa
Brian Beery	Spring Hill
Blair Thompson	Spring Hill

Congratulations!

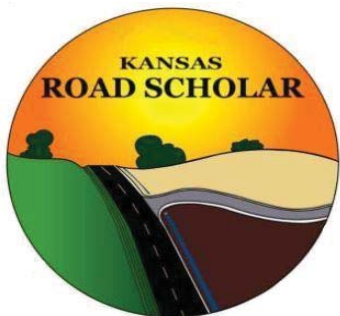


Level II Graduates

Name	County
Eula Hutton	Allen
Kim Riebel	Allen
Scott Reeder	Allen
Mitchell Garner	Allen
Jeremy Hopkins	Allen
Mark Jones	Butler
Marty Morehead	Johnson
Joe Collins	Riley
Robert Kraus	Sedgwick

Level III Graduates

Name	County
Raymond Klamm	Johnson
Jeff McGuire	Miami
Dennis Cooley	Saline
Dale Pfannenstiel	Trego



Partners

Kansas County Highway Association (KCHA)
 American Public Works Association (KS Chapter)
 Kansas Association of Counties (KAC)
 Local Technical Assistance Program (KS LTAP)
 Kansas Department of Transportation (KDOT)
 Federal Highway Administration (FHWA)

For more information on the Kansas Road Scholar Program contact Kristin at KS LTAP (785) 864-2594 or kbkelly@ku.edu