



The University of KANSAS

Undergraduate Study

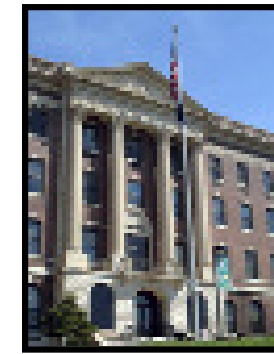
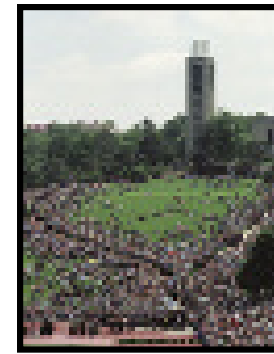
Anthropology



UNDERGRADUATE COORDINATOR:
David Frayer
OFFICE: *Fraser Hall,*
1415 Jayhawk Blvd., Room 622,
Lawrence, KS 66045-7556
PHONE: *(785) 864-4103*
E-MAIL: *frayer@ku.edu*
WEB SITE: *www.ku.edu/~kuanth*



*A department of the
College of Liberal Arts
& Sciences 2004-06*



Color photos, from left: KU's main campus is in Lawrence, Kansas. Graduates walk down the Hill at commencement. KU Medical Center is in Kansas City, Kansas. Photos by KU University Relations staff: David McKinney, Doug Koch, and Sharon Hartbauer.

With so many anthropology programs in the country, why should I choose KU?

► **FACULTY AND PEER SUPPORT.** Anthropology courses are taught by experienced faculty members who bring to their classes the same enthusiasm they have for research. The department also has an active undergraduate anthropology club that will broaden your experiences and allow you to interact informally with faculty members, graduate students, and other undergraduates.

► **RESEARCH OPPORTUNITIES.** As an anthropology major, you will have many opportunities to participate in research. Many classes make regular use of the ethnographic collections in Spooner Hall. The department and the biological anthropology lab house extensive data concerning human evolution. Archaeological field work provides practical experience in the techniques of archaeological data collection and analysis.

► **EXCHANGE PROGRAMS.** KU has exchange programs with many universities throughout the world. Through KU's Office of Study Abroad, you can spend a summer, a semester, or a year studying at almost any university in the world. The Department of Anthropology will give you great preparation for experiencing different cultures and for participating in the world community.

► **YOUR OVERALL EDUCATION.** The overall quality and breadth of your education is one great reason for coming to KU. The College of Liberal Arts and Sciences offers hundreds of courses and has excellent teachers. You will meet many international students and teachers who bring a cultural richness to campus and who will introduce you to the diverse viewpoints and customs so important to your undergraduate education. Concerts and shows in KU's Lied Center Series bring many of the finest national performers to campus.

If you would like information on other majors at KU, contact the University of Kansas, Office of Admissions and Scholarships, KU Visitor Center, 1502 Iowa St., Lawrence, KS 66045-7576. Telephone (785) 864-3911; fax: (785) 864-5017. E-mail: adm@ku.edu Web site: www.admissions.ku.edu

The University of Kansas prohibits discrimination on the basis of race, color, religion, sex, national origin, age, ancestry, disability, veteran status, sexual orientation, marital status, and parental status.

Is anthropology for me? To find out, you could begin by asking yourself: Do I have an interest in people and in their similarities and differences? Would I enjoy discovering how different peoples of the world organize their lives and societies and how they react to varying natural and human-made environments? Am I curious about how people adapt to diverse cultural and biological situations?

What is anthropology?

Anthropology is the study of past and present human societies. It is one of the most wide-ranging of the academic disciplines. Anthropologists are concerned with the origin, history, and future of our own species, so the field is as diverse as people are.

There are four main sub-disciplines of anthropology: Archaeology is concerned with studying the human past based on the material culture left behind. Biological or physical anthropology is concerned with human evolution and variation. Linguistics focuses on language, its history, and its evolution as a way to

understand humans and their cultures. Sociocultural anthropology is concerned with analyzing learned behaviors and describing contemporary and historical cultures. Applied anthropologists employ their interdisciplinary skills outside college and university settings.

As an anthropology student, you will learn about the varied cultures and peoples in the world, delve into the planet's prehistory, and develop an understanding of the biological aspects of human existence.

What can I do with a degree in anthropology?

Anthropology students learn to have a highly flexible perspective toward the similarities and differences among peoples and cultures. A degree in anthropology will prepare you for graduate work or for employment in community services or the business sector.

KU anthropology graduates work at universities and museums across the nation and with such federal agencies as the National Park Service and the Peace Corps. But as an anthropology major, you need not be limited to such work. Because anthropology is so diverse a discipline, it is



Who is the anthropologist? The study of cultural difference from within highlights the anthropologist's role as outsider. Photo courtesy of KU Department of Anthropology.

excellent preparation for an advanced professional degree in such areas as business, medicine, or law.

More and more, employers are seeking students with degrees in the liberal arts for management positions. They want people who can deal with concepts and abstractions, who are imaginative and creative — just the skills that studying anthropology will help you develop.

What degrees are offered?

Undergraduate anthropology majors can earn a Bachelor of Arts (B.A.) or a Bachelor of General Studies (B.G.S.) degree. Both degrees require a generous sampling of courses

in the humanities, social sciences, and natural sciences. Students earning a B.A. also will take courses in a foreign language.

Anthropology majors are encouraged to earn the B.A. degree because skill with a foreign language is an asset in a field that can take you anywhere in the world.

As an anthropology major, you will take introductory courses in each of the four subdisciplines: archaeology, biological anthropology, sociocultural anthropology, and linguistics. You also will take specialized upper-level courses, at least one of which will have a particular geographic focus.



David McKinney/KU University Relations

Fossils raise many issues about human origins.

What courses will I be taking? First-year students in the College of Liberal Arts and Sciences take English composition, mathematics, and courses that fulfill general education degree requirements. The *Undergraduate Catalog* gives more detailed information.

You will need at least 124 credit hours to graduate. The anthropology major requires a total of 30 credit hours in anthropology courses. Most students take about 15 to 17 credit hours, or four or five courses, a semester.

What is the faculty like? Faculty members are internationally recognized scholars and teachers with broad research interests. They teach

in fields ranging from humanities to natural sciences.

Anthropology is a multi-faceted field, so the faculty is diverse. Faculty members conduct research all over the world, including Europe, Africa, Asia, North and South America, and the Pacific.

How do I get into the department? As a first-year student, you will automatically be enrolled in the College of Liberal Arts and Sciences, and you can declare an anthropology major immediately. You will begin taking anthropology courses your first year.

You become a major when you fill out a major declaration form in the department office.

If you are earning a B.A. degree in anthropology, your first year's schedule might look something like this:

First semester	Hours
ENGL 101 Composition	3
HIST 101 Introduction to History	3
ANTH 104 Fundamentals of Physical Anthropology	4
Elementary Foreign Language I	5
TOTAL	15
Second semester	Hours
ENGL 102 Composition and Literature	3
MATH 101 Algebra	3
ANTH 110 Introduction to Archaeology	4
Elementary Foreign Language II	5
TOTAL	15

Confer with the undergraduate coordinator as early as possible and plan to meet with your adviser at least once each semester.

Can I get a scholarship?

The Department of Anthropology administers the Harley S. Nelson Family Fund scholarship, given on a competitive basis. Talk to the undergraduate coordinator to find out if you are eligible.

Each year, the department gives the Mark Kappelman Award to support an undergraduate student's archaeology project. Dennis R. and Nancy Ann Dahl awards are presented to the outstanding student in each introductory course each semester and to the author of the outstanding senior thesis each year.

One out of four KU first-year students is on a scholarship awarded by the Office of Admissions and Scholarships or by KU academic departments.

For information about scholarships based on academic merit, diversity, major, and residence, write or call the University of Kansas,

Office of Admissions and Scholarships, KU Visitor Center, 1502 Iowa St., Lawrence, KS 66045-7576, (785) 864-3911, www.admissions.ku.edu.

For information about grants, loans, and need-based financial aid, write or call KU's Office of Student Financial Aid, Strong Hall, 1450 Jayhawk Blvd., Room 50, Lawrence, KS 66045-7535, (785) 864-4700, www.ku.edu/~osfa.

Can I study abroad?

KU offers low-cost, high-quality semester, academic year, spring and summer break study abroad programs in approximately 50 countries throughout the world. Students can study in Africa, the Americas, Asia, Australia, or Europe. KU's Office of Study Abroad, Lippincott Hall, 1410 Jayhawk Blvd., Room 108, Lawrence, KS 66045-7515, (785) 864-3742, www.ku.edu/~osa, offers affordable, carefully planned, academically enriching programs in countries such as Brazil, France, Russia, Japan, Mexico, and Australia, among others.

Depending on the program you select, you may live with a family or in a dorm and combine study with travel. Courses are KU approved and meet many KU degree requirements.

Where can I get more information? For further information about anthropology at KU, write or call the University of Kansas, Department of Anthropology, Fraser Hall, 1415 Jayhawk Blvd., Room 622, Lawrence, KS 66045-7556, (785) 864-4103, www.ku.edu/~kuanth.

What if my interests change after I come to KU? Whatever you decide, KU offers hundreds of undergraduate programs from which to choose. As a student in the College of Liberal Arts and Sciences, you will explore many academic areas and take courses in many subjects. One of them will lead you toward a major and a career.



Photo by KU University Relations

Faculty members often engage students in research with material culture.

The KU difference. The 2005 Fiske Guide to Colleges gives KU four stars for academics, social life, and overall quality of university life. Only a handful of state universities received higher marks for academics. The Fiske Guide calls KU one of the top 20 public university best buys for "remarkable educational opportunities at a relatively modest cost."

Anthropology faculty members conduct research in local, state, national, and international settings on projects ranging from ancient DNA to Neandertal teeth, from immigration in Kansas to human rights in Africa, from building American native language texts to Central Asian language roots, from European prehistory to Kansas archeology. Faculty members enrich classroom teaching with their research experiences and, sometimes, offer advanced undergraduates opportunities to participate.

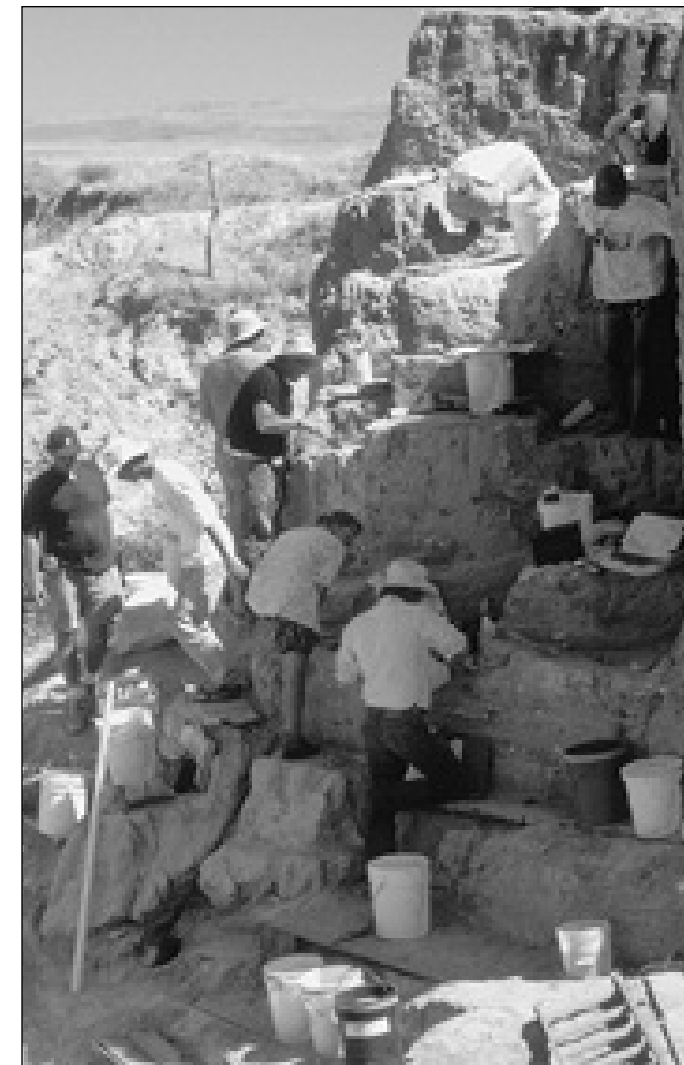


Photo courtesy of KU Department of Anthropology

Each summer, the University of Kansas and Kansas State University run an archaeological field school, where students learn excavation and analysis procedures.

Each year, more than 60 Undergraduate Research Awards are available to students for original research projects supervised by KU faculty members. Students compete to receive \$500 to fund research during the academic year and at least \$1,300 for summer research projects.

KU has a lively international environment, with more than 1,600 international students and many faculty members who have lived overseas.

The Ermal Garinger Academic Resource Center, 4069 Wescoe Hall, (785) 864-4759, www.ku.edu/~egararc, offers access to extensive collections of audio, video, and multimedia materials, including foreign-language movies, cultural programs, and documentaries. You can hear the news from almost 60 countries through a satellite link with SCOLA, an international news broadcast. The center transmits some broadcasts and tapes others.