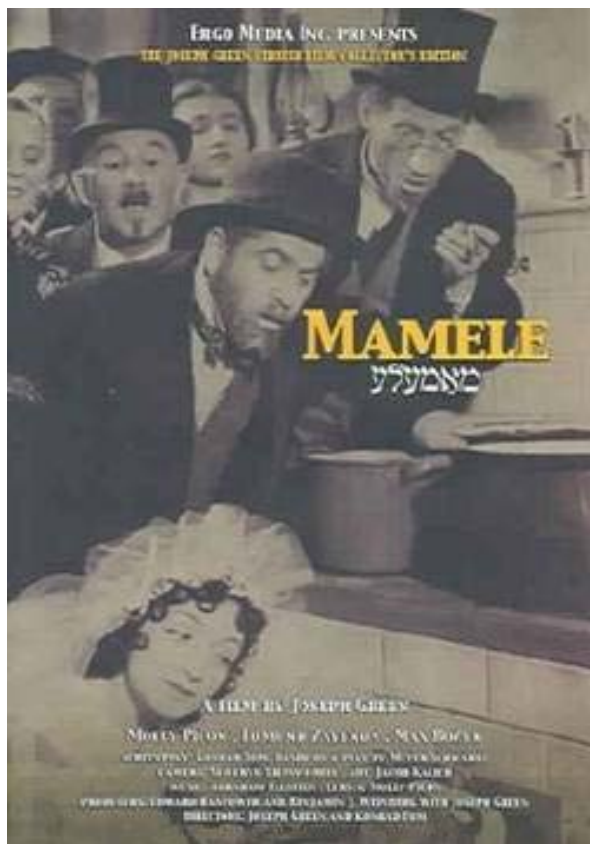


Center for Russian, East European and Eurasian Studies

Yiddish Film Series

Presents

Mamele (Little Mother)



Filmed in Poland in 1938, *Mamele* (Little Mother in the original English name) is one of the best Yiddish movies made in pre-war Poland, introducing the many talents of its super-star Molly Picon. Picon plays a young daughter of a widower who is left with the responsibilities of raising a family of seven helpless and indifferent people. She becomes their Little mother and manages to keep the family together.

In Yiddish, with English subtitles

Thursday, February 12, 7:00-9:00pm
318 Bailey

Free and Open to the Public
Refreshments will be Served



This film series is sponsored by the KU Center for Russian, East European and Eurasian Studies. It is made possible by a Title VI Department of Education National Resource Center grant and the generous support of our students, faculty and staff

www.crees.ku.edu